

# City of Greeley Water Conservation Plan

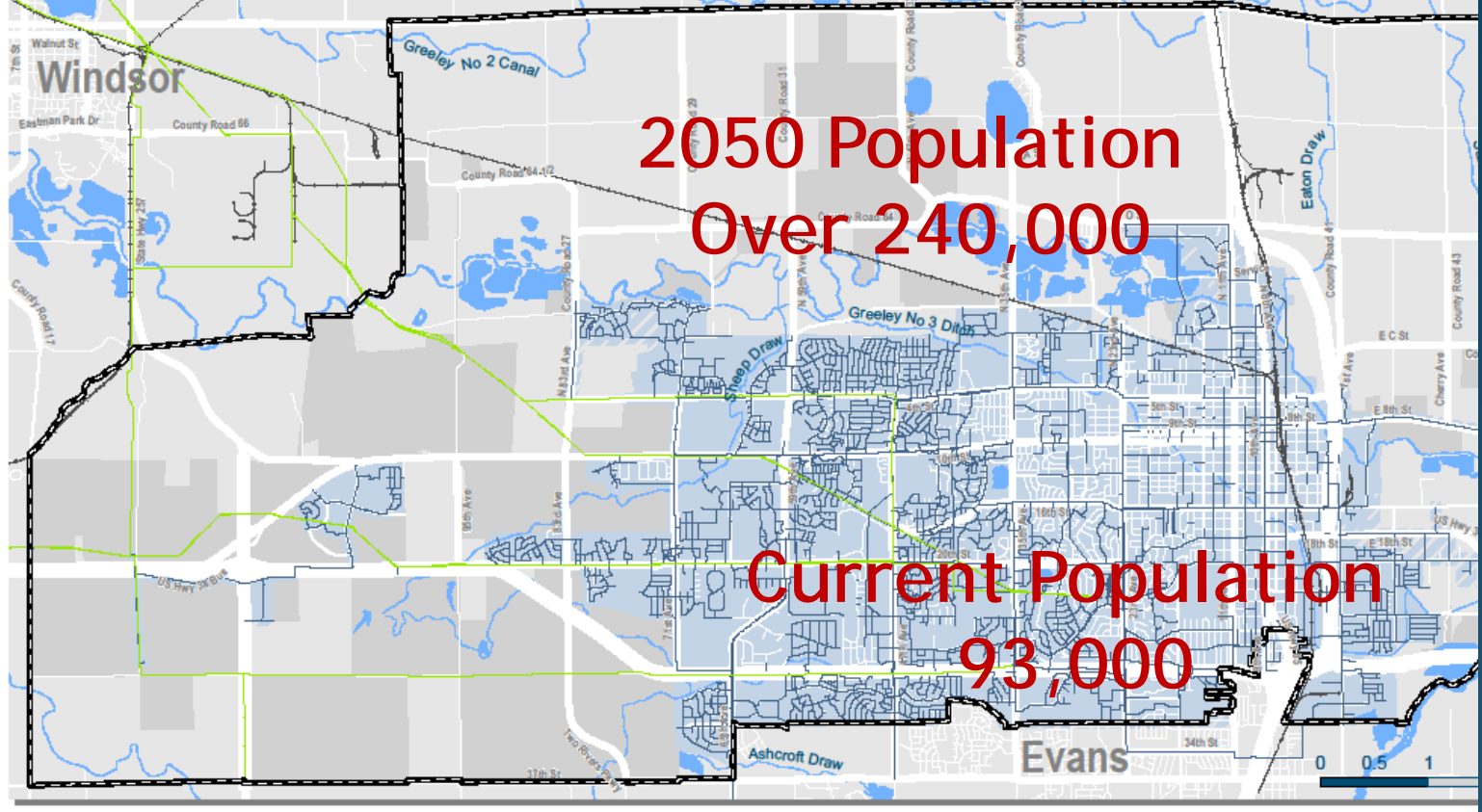
“Dripping water hollows out  
stone, not through force but  
through persistence.”

— Ovid

January 2015

# Greeley's 2060 Comprehensive Plan

- The 2060 Plan was adopted in 2009
  - Reviewed key community indicators, trends, projections to assess growth and development
- Population and Growth - Population will Increase -Water Demands will Double
- To Meet Citizen Water Needs - Water Master Plan



**2050 Population  
Over 240,000**

**Current Population  
93,000**

# 2010 APFA



Created: 6/29/2010 By: Planning, GIS

### Legend

- 2010 APFA Water Service Boundary
- Water Transmission Lines
- Within City Limits
- 8" or Larger Water Lines
- Out of City Limits
- Service Boundary:  
The greatest extent of existing 8" or larger water service lines

### APFA:

Adequate Public Facilities Area, the region within which there are existing or budgeted capital improvements for public facilities.

### LREGA:

Long Range Expected Growth Area, the region within which the community is expected to grow over the next twenty to fifty years.

### Service Note:

Updates to infrastructure are continual and data representation will change over time. Representation is a general boundary and further review based on different developments is required. Contact the City of Greeley to request a formal review of service locations for a subject property.



# Water Master Plan

## Four Point Plan

- Maintain what you have
  - Cement mortar lining of water lines
  - Fiberglass lining of sewer lines
- Secure supply stay ahead of demand
- Build storage for the lean times
  - Milton Seaman Project
- **Conserve what you have**
  - State approved water conservation plan

# Long-Term Conservation Plan

- State law **requires** water providers to develop a state-approved conservation plan
- Greeley's Plan documents our commitment
  - Began in 1907 with water restrictions
  - Fully metered 1996
  - Comprehensive program by 2006
- Plan commits to additional 10% water demand reduction by 2035

# Comprehensive Conservation Program

- Fully metered since 1996
- Leak detection: less than 5% system losses
- Continual watering restrictions since 1907
- Free irrigation & commercial audits, rain sensors
- Rebates for high-efficiency washers and toilets
- Required soil amendments; grants for xeric
- Water Insight Pilot
- Water Budget Program
- Continual Education

# Conservation Program 2014

- Water Budget Pilot Program – City Wide
  - A water budget defines the amount of water each customer needs when used efficiently
- Focus on Landscape – Work With Planning
  - Landscape and Species
- Converting Parks to Xeric – Work With Parks
  - New Parks 15% - 20% xeric
  - Existing parks convert 5% - 10%

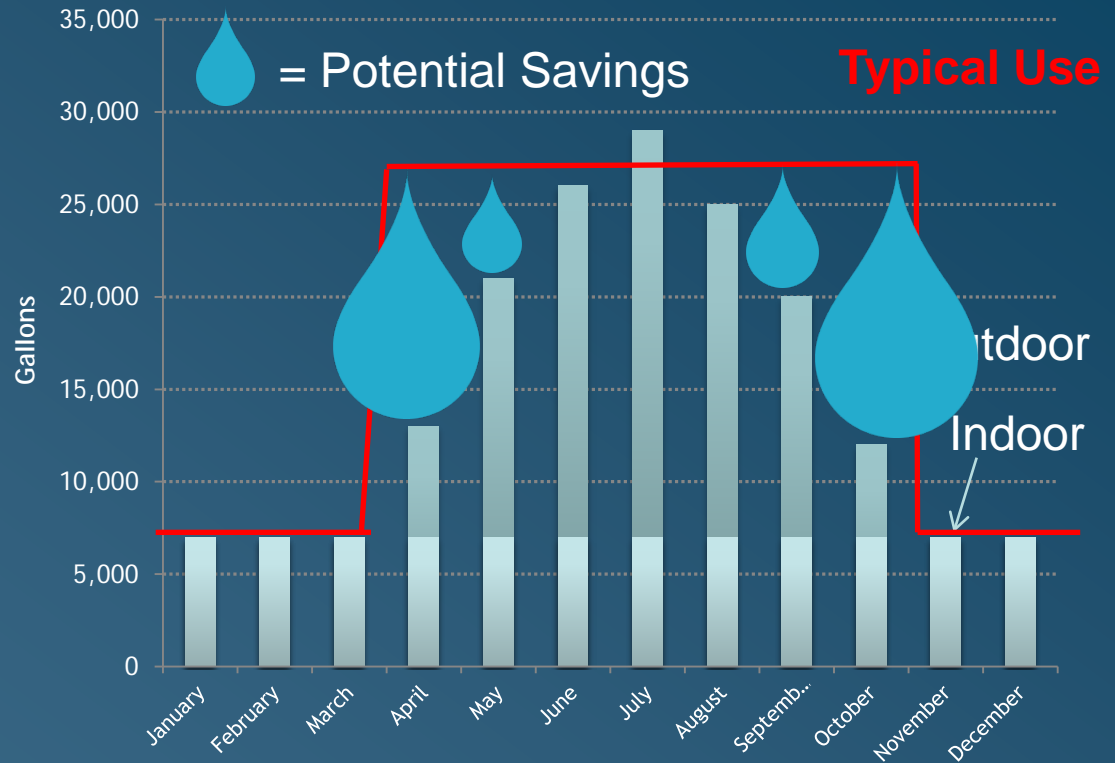
# What is a “water budget”?





# Water Budget - City Wide

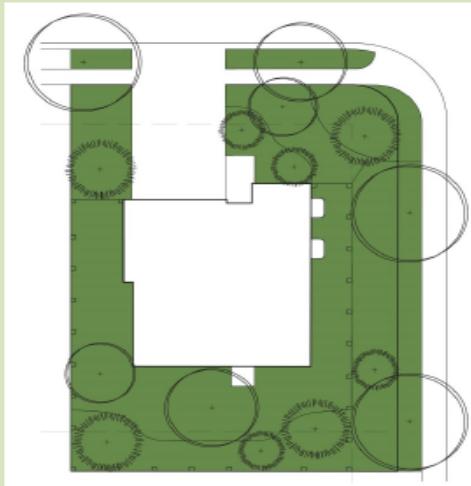
- A water budget defines the amount of water each customer needs when used efficiently



Indoor use is based on # people...  
Outdoor use is based on lot size

# Landscape - Working with Planners

## Alternative Irrigation Demand Landscape Design Based on Water Budget



### Water use at water budget

Full 4,781 s. f. 19 g/ s. f. 90,839 g/ yr.

### Water Use Zones

| Description           | Irrigation gallons/ s.f. |
|-----------------------|--------------------------|
| High Water Use        | 17 to 19                 |
| Medium High Water Use | 14 to 17                 |
| Moderate Water Use    | 10 to 14                 |
| Low Water Use         | 5 to 10                  |
| Very Low Water Use    | 0 to 5                   |

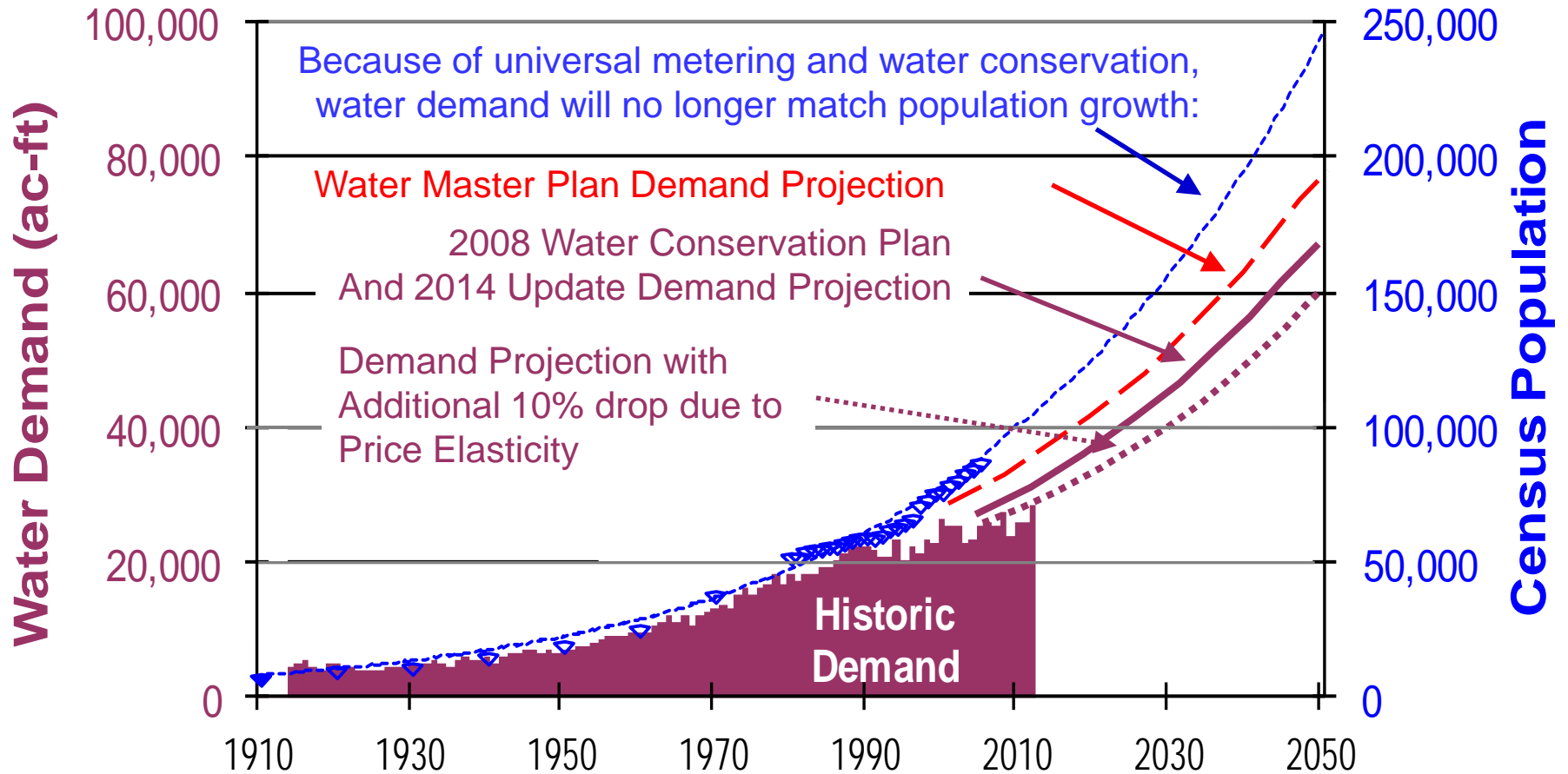
26

# Updated Conservation Program Plan 2014

## Water Sense Subdivision - Pilot

- Water Budget Pilot Program - City Wide
- Focus on Landscape - Work With Planning
- Converting Parks to Xeric - Work With Parks

# Reductions in Estimated Water Demand



# Questions?



City of Greeley Water & Sewer Department • 1100 10<sup>th</sup> Street, Suite 300 Greeley, CO 80631  
[www.greeleygov.com/water](http://www.greeleygov.com/water) • (970) 350-9811

