

# **JOINT OPERATIONS PLAN – JOP**

John Kolanz, Bedingfield & Peters, LLC, formerly City of Greeley legal counsel, will tell about the Joint Operations Plan—an early collaborative effort between ag/urban/environmental interests to increase winter flows in the Poudre

# **JOINT OPERATIONS PLAN – JOP**

## **I. BACKGROUND**

United States Forest Service reissuance of Special Use Authorizations for certain existing reservoirs in the Poudre Basin. FLPMA and forest plan require protection of scenic and ecological values.

## **II. PROBLEM/ISSUE**

Wintertime flows downstream from dams.

## **III. INITIAL SOLUTION**

Bypass flows.

## **IV. CONFLICT**

Facility owners strongly opposed; environmental interests strongly supported; Forest Service obligated to protect resources.

## **V. COOPERATIVE SOLUTION**

JOP.



JOP

Legend

Chambers

Barnes Meadow

Joe Wright

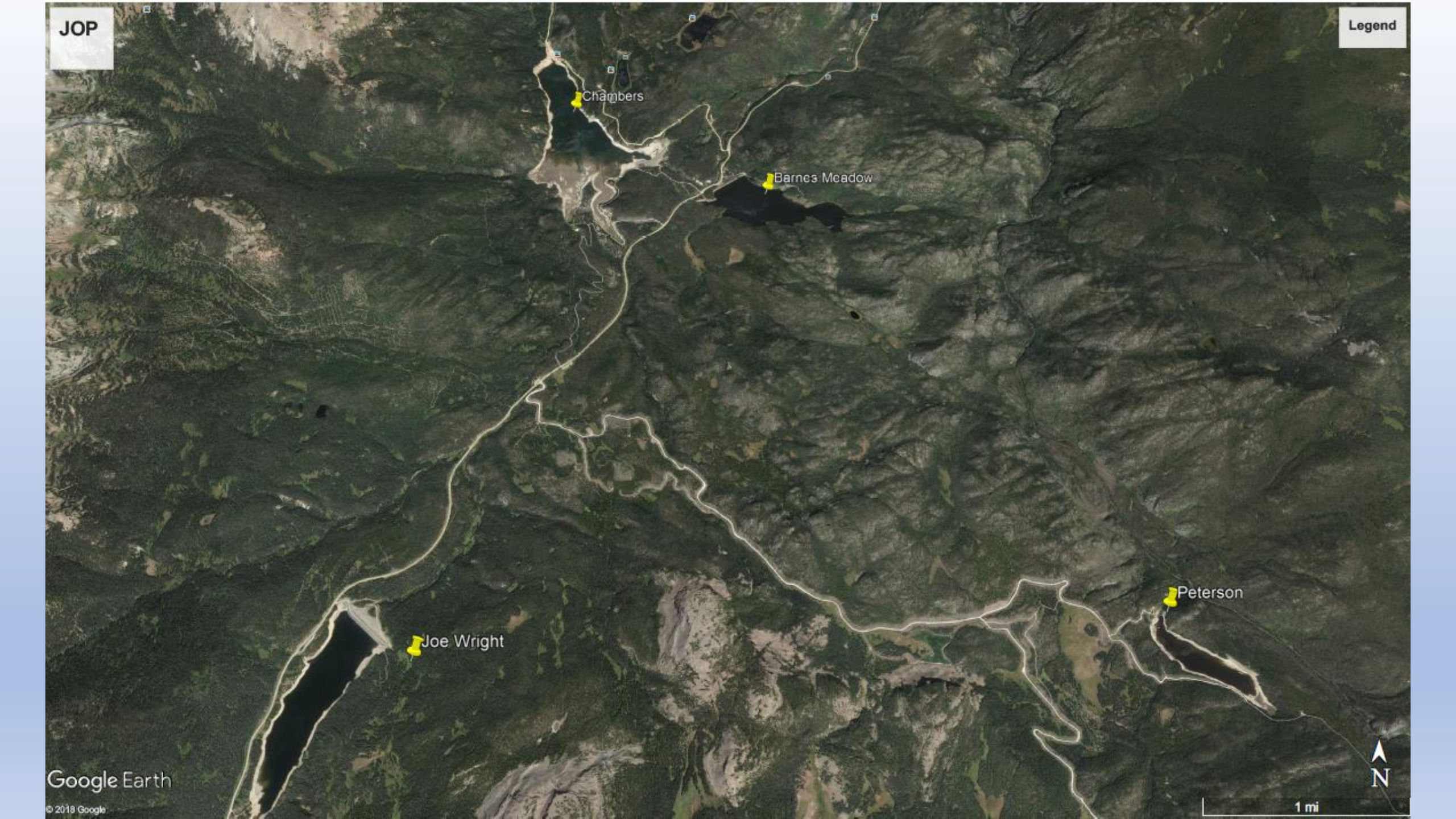
Peterson

Google Earth

© 2018 Google



1 mi



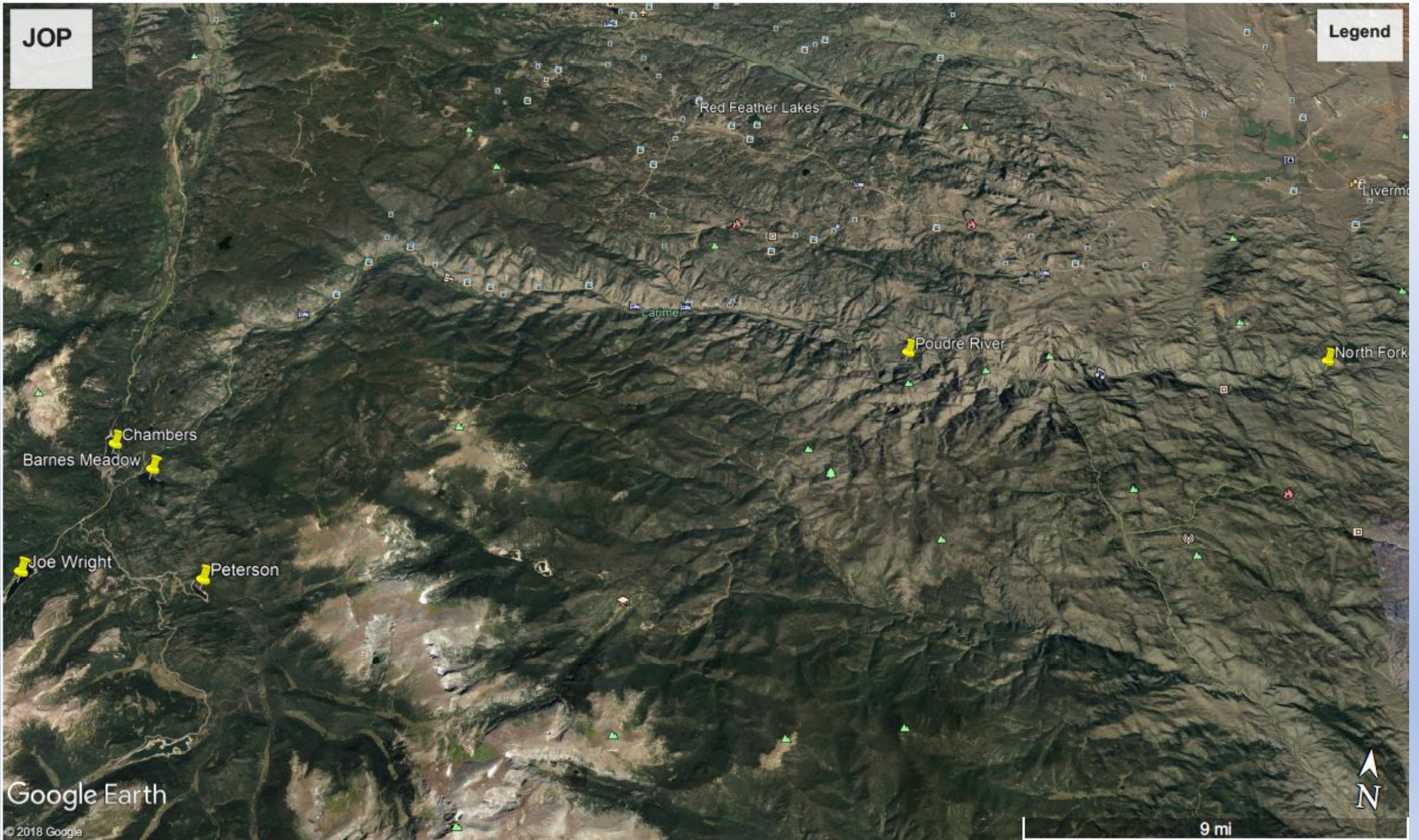
# **GENERAL PLAN ELEMENTS**

- Water is released from Barnes Meadow and Chambers Lake at a target rate of 10 CFS from November 1 through March 31 each year (approximately 3000 acre-feet annually).
- Water exceeding winter municipal demands for Greeley and Fort Collins may be released to achieve the 10 cfs target if it can be stored in downstream reservoirs and used by exchange.
- Released water flows through approximately 50 miles of the Poudre River mainstem.
- The 10 cfs target should be attainable 9 out of 10 years.
- Releases can be adjusted to accommodate natural variations in flow.



JOP

Legend



Google Earth

© 2018 Google

9 mi

N



# **NOTABLE ASPECTS/BENEFITS OF PLAN**

- The parties have implemented the plan every year since 1994.
- The parties have met the 10 cfs/3000 acre-feet goal every year except 2017.
- The 3000 acre-feet of annual flows more than doubled the historical winter releases from the high mountain reservoirs.
- Analysis showed the plan increased Poudre River wintertime aquatic habitat by approximately 20%. The analysis also showed that the JOP would be more effective than bypass flows.
- Helps prevent ice formation.